

Information about the badges that you can get for your active participation on the platform

At **ShapeMS**, we promote learning and expanding network opportunities with a series of online badges to demonstrate personal development, accomplishments, and creating a large network of solidarity and inclusion for people with multiple sclerosis.

Are you an **employer**? Register and successfully complete the modules in the *Information and Support for Employers* section. There are three badges available:



Badge “Inclusive Innovator”. Achieved by completing the following modules:

- Inclusive workplace policies and procedures
- Accessibility and workplace design
- Effective communication techniques for creating an inclusive workplace
- Feedback and continuous improvement
- Inclusive recruitment and onboarding



Badge “MS Support Advocate”. Achieved by completing the following modules:

- Understanding Multiple Sclerosis
- MS mental health awareness and practical recommendations for employers
- Supporting career development for employees with MS
- Work-life balance and flexibility
- Building a supportive workplace community



Badge “Inclusive Workplace Champion”

Achieved on completion of all modules in the section *Information and Support for Employers*.

Upon successful completion of the above, you will receive your *Inclusive Ambassador certification*. Along with the certification, you will be entitled to receive a benefits kit such as - but not limited to - the platform badge, recognition on the **ShapeMS** website, and information on funding opportunities.

Are you a **person with Multiple Sclerosis**? There are four badges available to you after registering on our platform and completing the relevant modules:



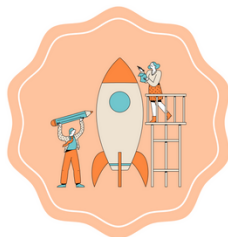
Badge “MS Fighter”

Achieved by completing the modules in the *Living well with MS* section.



Badge “MS Work Navigator”

Achieved by successfully completing the modules in the section *Work and financial life with MS*.



Badge “MS Skills Voyager”

To obtain this, you have to complete the modules in the *Learning new skills* section.



Badge “SuperMentor”

For those who want to mentor young people newly diagnosed with MS by completing the modules in the *Supporting each other* section and leaving a *testimonial*.

